

# 2020 World Bowling - Stockholm



Oil Pattern Distance: **36 Feet**  
 Forward Oil Total: **21.65 mL**  
 Forward Boards Crossed: **433 Boards**

Reverse Brush Drop: **36 Feet**  
 Reverse Oil Total: **4.4 mL**  
 Reverse Boards Crossed: **88 Boards**

Oil Per Board: **50 uL**  
 Volume Oil Total: **26.05 mL**  
 Total Boards Crossed: **521 Boards**

	Start	Stop	Loads	Speed	Crossed	Start	End	Feet	T.Oil
1	2L	2R	2	10	74	0.0	1.4	1.4	3700
2	3L	3R	2	14	70	1.4	5.3	3.9	3500
3	5L	4R	2	14	64	5.3	9.2	3.9	3200
4	6L	5R	3	18	90	9.2	16.8	7.6	4500
5	7L	6R	2	18	56	16.8	21.9	5.1	2800
6	8L	6R	2	18	54	21.9	27.0	5.1	2700
7	9L	7R	1	22	25	27.0	30.1	3.1	1250
8	2L	2R	0	30	0	30.1	36.0	5.9	0

	Start	Stop	Loads	Speed	Crossed	Start	End	Feet	T.Oil
1	2L	2R	0	30	0	36.0	15.0	-21.0	0
2	11L	10R	2	18	40	15.0	9.9	-5.1	2000
3	9L	8R	2	14	48	9.9	6.0	-3.9	2400
4	2L	2R	0	10	0	6.0	0.0	-6.0	0

Conditioner:  
Type In or Select One

TransferType:  
Type In or Select One

Forward



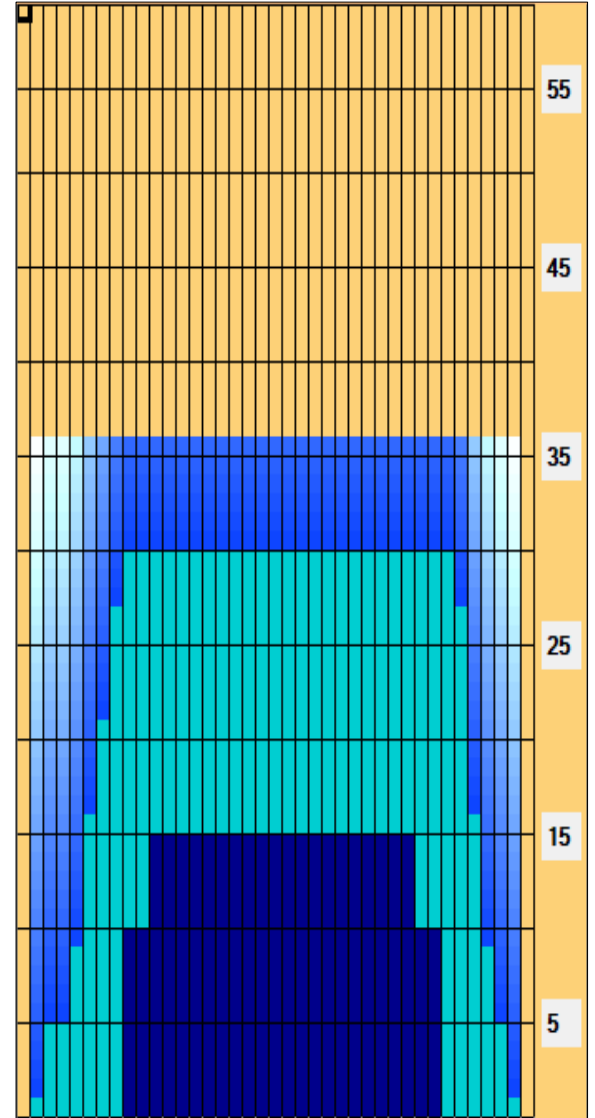
Reverse



Combined



Buff



Item	3L-7L:18L-18R	8L-12L:18L-18R	13L-17L:18L-18R	18L-18R:17R-13R	18L-18R:12R-8R	18L-18R:7R-3R
Description	Outside Track:Middle	Middle Track:Middle	Inside Track:Middle	Middle: Inside Track	Middle:Middle Track	Middle:Outside Track
Track Zone Ratio	2.65	1.11	1	1	1.05	1.96

